

# ± 2.875 ACRES FOR SALE SPRING LAKES II COMMERCIAL

Spring, Texas

## Tract #20

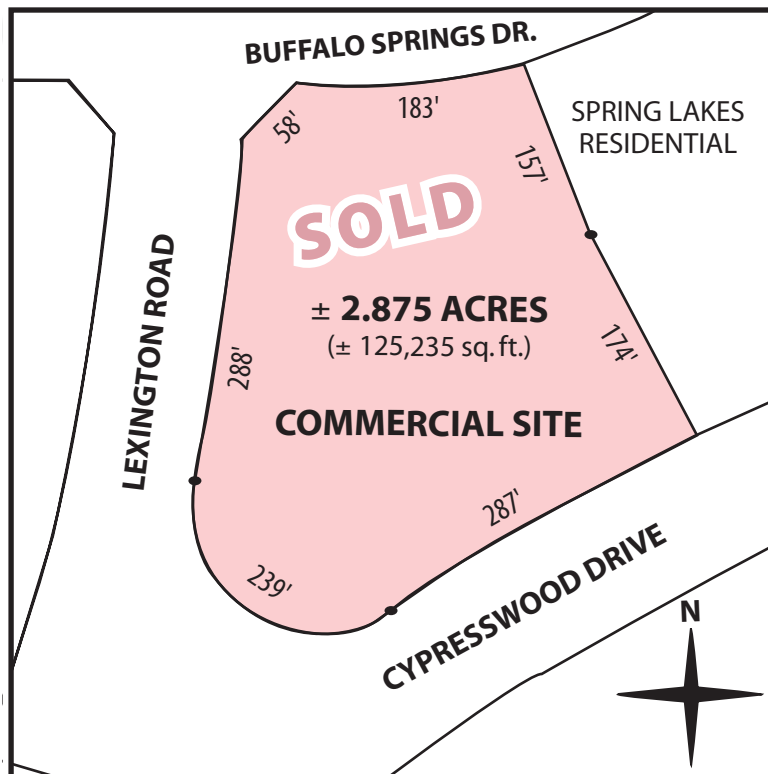
*(utilities available & detention **not** required)*

**LOCATION:** Located at the corner of Lexington Rd. and Cypresswood Dr. in the Houston ETJ.

**PRICE:** Call for pricing.

<b>TAX AUTHORITY:</b>	Harris County	0.84
	MUD 249	1.20
	Spring ISD	1.44
	Approx. Tax Rate (2008)	\$3.48 per \$100 value

**FEATURES:** The area on the East and West side of I-45 from Cypresswood to Louetta have experienced tremendous growth in recent years. A Wal-Mart Supercenter, Kohl's Department Store, numerous car dealerships, restaurants and retail space have been developed. This tract is located in close proximity to the Spring Lakes Residential Development which will ultimately consist of ± 800 single-family residential units built by Perry Homes, D.R. Horton Homes, and Village Builders. The Cypresswood Lake Residential Development is located just South of this site on Cypresswood. It will consist of ± 500 single-family residential units.



**SAM YAGER INCORPORATED**

For more information on this property please contact:

**Sam Yager, Jr. - Broker** (license #0201563)

**Office: 713-783-0308**

**Fax: 713-783-0704**

or visit our website at:

**800 Bering Drive, Suite 225**

**Houston, Texas 77057**

**www.SYI.net**

*\*This does not constitute an offer to sell and is for discussion purposes only. All information contained herein should be independently verified by any party expressing an interest. Last Updated 3-06-08*